



# ENVEST

## Envest

Username. Documentation / Change Password / Log Out

file edit view help

### main menu

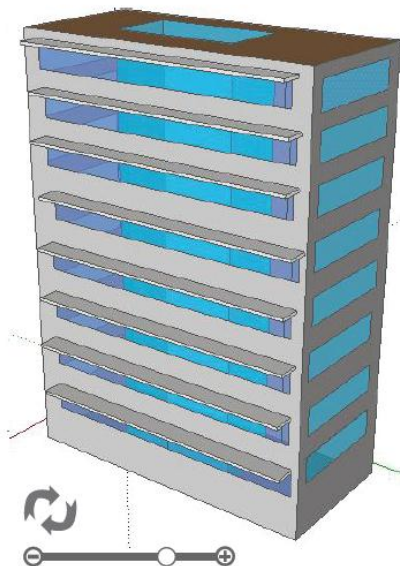
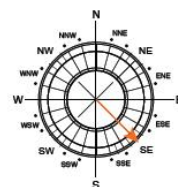
- client brief
- building specifications
- services
- elements**
- reports
- exit

progress 80%



### elements

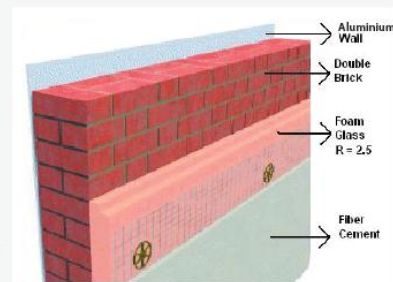
- walls**
- upper floors
- windows
- foundations
- finishes
- roofs
- back



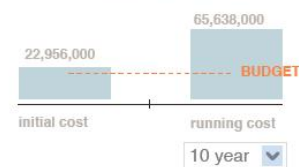
### materials of north - east facade

- cladding: aluminium
- outer layer: double brick
- insulation: foam glass
- inner layer: fibre cement
- total value: 0.66 w/m<sup>2</sup>
- percentage of glazing area: 40%

press button to specify more details



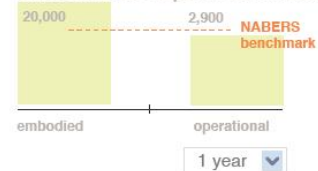
### building 2 (optimal insulation) life cycle costs (\$AUD)



### building 1 (minimal insulation) life cycle costs (\$AUD)



### environmental impact (CO2 emissions)



### environmental impact (CO2 emissions)

